

OUR PURPOSE

*Partners in problem solving.....*



## ISO-Xpert Management & IT Consultants

D-32, Block-7,  
Gulshan-e-Iqbal,  
Karachi-75300  
Pakistan

Phone: 4973151, 465995  
Fax: 021-4973150  
Email: [info@dotxperts.com](mailto:info@dotxperts.com)  
Url: [www.dotxperts.com](http://www.dotxperts.com)

ISO-Xpert Management & IT Consultants

# FACTORY SETUP SERVICES

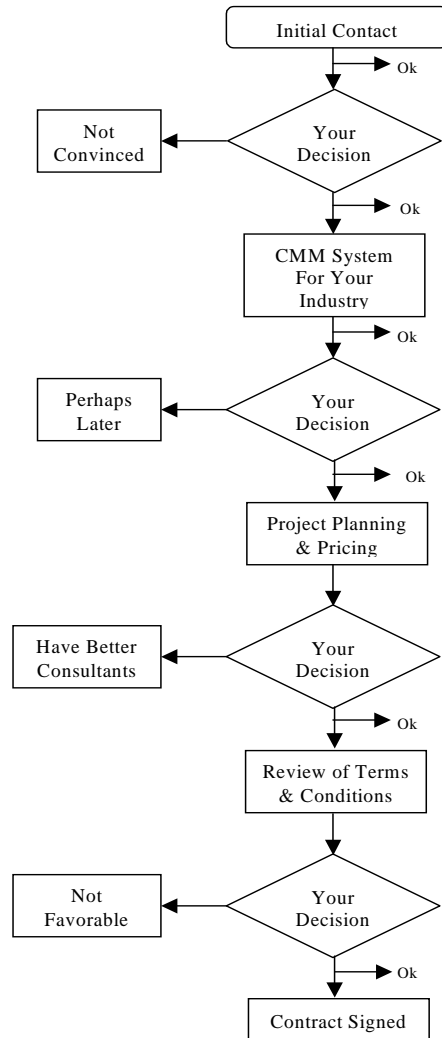
*Partners in problem solving ....in design and construction*



### Scope of Services:

- Factory & End-Product Planning
- Site Selection
- Factory Layout and Design
- Material Handling and Storage Planning
- Safety & Evacuation Plan
- Office Space Planning
- Laboratory Space Planning
- Designing Display/Conference Rooms
- Production Flow and Line Balancing
- Machines and Object Placement Plan
- Basic Amenities Plan (washrooms/water)
- Computer Modeling & Virtual Tour
- Construction Management

How Do We Serve You?



*List of Our other Services*

- ISO 9000:2000
- SA-8000
- WRAP
- ISO-14000
- ISO-18000 (OSHAS)
- ERP
- HR-PLACEMENT
- TRAINING COURSES
- OEKO-TEX 100
- HACCP
- SEI-CMM
- TQM
- BUSINESS PLAN & FEASIBILITY REPORT**

## Construction Management Systems

We will represent you on your construction project to ensure that your needs are met, by assisting your organization to generate a scope of work. Budgeting, contractor selections, scheduling, and implementation are also the other features provided by our firm. The Experts can either coordinate with your contractors and in-house personnel, or we can provide you with proven and reliable contractors and subcontractors.

Our primary objective is to enable your project's success. This is achieved by leveraging our investment in technology and discipline. We assist our clients in project management principles by:

- Lowering and controlling costs
- Delivering projects on time
- Achieving quality and safety objectives

*With the knowledge, ability and technology, ISO-Xpert is ready and able to provide the full spectrum of Construction Management services to your desired project!*



## Table of Contents

|  |    |
|--|----|
| Who are we?                            | 4  |
| Factory & End-Product Planning         | 5  |
| Site Selection                         | 5  |
| Factory Layout                         | 6  |
| Material Handling & Storage Planning   | 6  |
| Safety & Evacuation Planning           | 6  |
| Office Space Planning                  | 7  |
| Production Flow and Line Balancing     | 7  |
| Laboratory Space Planning              | 8  |
| Machine and Object Placement           | 8  |
| Basic Amenities Planning (Factory Act) | 8  |
| 3D- Virtual Tour & Factory Modeling    | 9  |
| Display Room & Interior Designing      | 9  |
| Construction Management System         | 10 |

## Who are We?

### WHY ISO-XPERT

A company's facilities are often its largest single investment and a key to the effectiveness of its operations. We at ISO-Xpert design and manage factory buildings, office complexes, and other commercial and industrial facilities. We as engineers, architects, building managers of your project, provide information on various aspects of designing, evaluating, and selecting facilities plans.



*advice, plans, tools & services...*

### OUR CONSULTING

We consult you with the latest strategies for managing different types of projects, while delivering solutions to a wide range of problems.

Such examples incorporate contracts, regulatory matters, and construction, which comply with International Standards, **customer factory requirements**, safety requirements and maintenance. We also provide drawing of communication lines, including water, gas, electrical, sewerage supply lines etc.



## 3D-VIRTUAL TOUR

### Computer Modeling for Facility Design



By using current technology, project management becomes more efficient and saves money. Nearly all our project managers are AutoCAD-proficient

and are equipped with the latest computer equipments, which aid them in modeling facility plans.

We use AutoCAD to assist our customers in various ways, which includes:

- Using "intelligent" furniture libraries to place modular furniture in a building, with the ability to run reports itemizing the pieces and parts used in their quantities.
- Maintaining accurate drawings of our customers' buildings while showing the locations of the employees within the buildings.
- Creating 3D rendered drawings of machinery and architectural elements

### Designing Display/Conference Rooms

We also take care of your Interior Designing work / Display room Designing. The company Legend being dedicated to good design and always as a challenge prepared to follow new paths to the good furniture, have traditionally been providing exclusive interiors for all display areas. In the factory Legend we have a fine feeling for customer needs and so-called gaps in the market.



*Design and Plan better if you want to save your cost....*

### Laboratory Space Planning

Space planning for laboratories is carried out to identify the most suitable place in your industrial unit to establish and maintain a laboratory. It covers detailed lab programming including rack locations, electrical, data and voice connections including devices. All equipment required for testing also incorporates safety and security measures.



### Machines and Object Placement Plan

This plan is executed to establish the identifying points/locations for the placement of machinery to achieve proper line balancing of your organizations' production facility while identifying related processes in respect with each department for their functions.



### Basic Amenities Plan (washrooms/water)

The basic amenities plan calculates the no of workers operating in shifts at your premises and establishes the no of washrooms and other basic services needed, which are required by Factory Laws and the ILO. (International Labor Organization)



### CUSTOMER COMPLIANCE



### Factory & End-Product Planning

In this category, we analyze and establish what the objectives are of your enterprise regarding your factory design, applying either a product or process- based approach. Working with your specifications and requirements, we shall effectively create a factory layout plan that will accommodate today's needs as well as the future growth. This may include interviews with specific user groups to determine the criteria for space, and desired process flow, with an end product design in mind. Requirements such as headcount, square footage, department needs, and storage capabilities will be also reviewed.

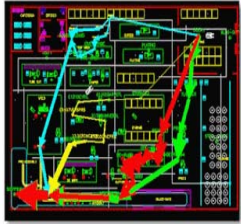
### Site Selection

The major purpose of site planning and selection is to identify a long-range plan of action that will provide the appropriate quantity and quality of optimally located facilities for a cost-effective level of investment.



Strategic planning studies conducted by ISO-Xpert address critical issues such as:

- What size and type of facility is required.
- Where to locate
- What sort of services required



## Factory Layout

Here, we design and plan factory sites in order to meet the requirements of corporate goals, complying with regulatory and statutory requirements of other third parties i.e. customer, International Standard body and Land Law. (Factory Act 1934.)

## Material Handling & Storage Planning



To improve material handling and storage planning, we must establish and analyze the space of the factory. This is fulfilled to improvise movement for product/man/machines/vehicles when the plant is at its full capacity load, where all offices & holding areas are designated. Aisle designing and shelving recommendations are also a feature, in accordance to your factory. It answers these questions:

- Where & Why to store
- How to store
- What is the suitable storage recommendation for your material

## Safety & Evacuation Plans



Designing an effective evacuation plan to prevent injuries at work is extremely essential for any organization. This is achieved by ensuring effective handling of fire extinguishers, first aid boxes, house keeping and health exposure, and by maintaining safety and security inside the factory. All these ought to be well placed and should follow a defined system.

- Evacuation Plan
- Fire Exits
- Safety Points

## Office Space Planning

By establishing and planning factory sites and point of the office location, you can gain optimum control and efficiency on your employees and the organization they work for. Office space planning identifies the most suitable point for managers, In-charges or Supervisors to be seated for improvised work execution. The advantages of a better office layout are:



- Greater production of visual controls of operations or activities
- Better Communication & Coordination between staff
- Easy Access to day to day operations knowledge
- Ergonomics consideration

## Production Flow and Line Balancing



Xperts designing production flow, is an extensive study of your processes for establishing the arrangements of machines and its workers in a line. This is according to the operations that need to be performed in order to assemble a particular product in your facility. **Line balancing**, on the other hand, is a study that tries to equalize the amount of work at each workstation. The scope of line balancing is to :

- Establish Optimum cycle time of product
- Reduce Balance delays in operations
- Increase Efficiency of your operations